



Flygt 2620.172

Table of Contents

1 Introduction.....	2
1.1 Specially approved products.....	2
2 Product Description.....	3
2.1 Products included.....	3
2.2 The data plate.....	3
2.3 Product denomination.....	3
3 Spare Parts.....	5
3.1 Exploded view.....	5
3.2 List of parts.....	6

1 Introduction

Purpose of this manual

The purpose of this manual is to provide necessary information on spare parts and accessories order.

Disclaimer

Always use genuine Flygt parts. The use of other spare parts or accessories can invalidate any claims for warranty or compensation. Xylem does not take any responsibility for damages that are caused by the use of non-original parts. For more information, contact your local sales and service representative.

Data for ordering spare parts

The following information is needed for spare part orders:

- Serial number of the product
- Part number
- Quantity of bulk material, see * in tables

1.1 Specially approved products

Qualification of personnel

Only Xylem or Xylem-authorized service personnel may undertake repair work on Ex-approved products.

Dimensional accuracy inspection

Spare parts marked with (Ex) after the part number are subject to dimensional accuracy inspection.

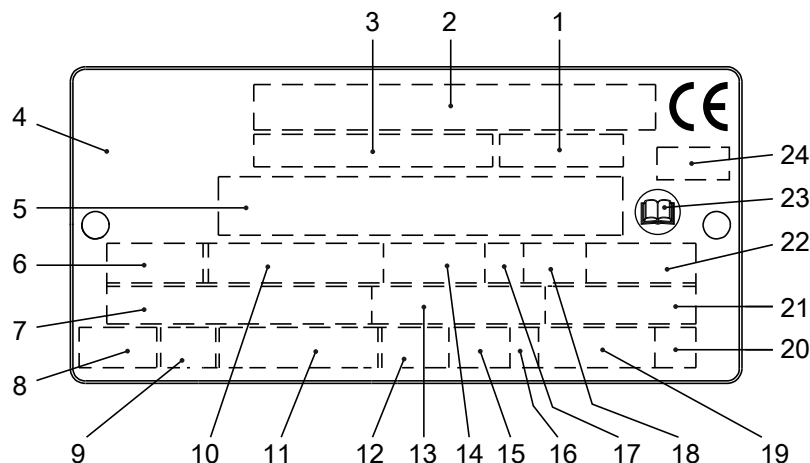
2 Product Description

2.1 Products included

Pump model	Standard	EX	MSHA	Drainage	Sludge
2620.172	X			X	

2.2 The data plate

The data plate is a metal label that is located on the main body of the products. The data plate lists key product specifications. Specially approved products also have an approval plate.



1. Curve code or Propeller code
2. Serial number
3. Product number
4. Country of origin
5. Additional information
6. Phase; type of current; frequency
7. Rated voltage
8. Thermal protection
9. Thermal class
10. Rated shaft power
11. International standard
12. Degree of protection
13. Rated current
14. Rated speed
15. Maximum submergence
16. Direction of rotation: L=left, R=right
17. Duty class
18. Duty factor
19. Product weight
20. Locked rotor code letter
21. Power factor
22. Maximum ambient temperature
23. Read installation manual
24. Notified body, only for EN-approved Ex products

Figure 1: The data plate

2.3 Product denomination

Reading instruction

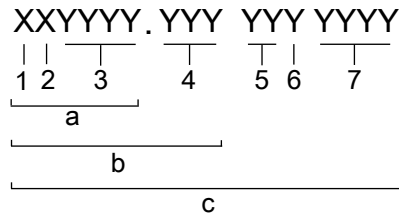
In this section, code characters are illustrated accordingly:

X = letter

Y = digit

The different types of codes are marked up with a, b and c. Code parameters are marked up with numbers.

Codes and parameters

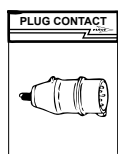
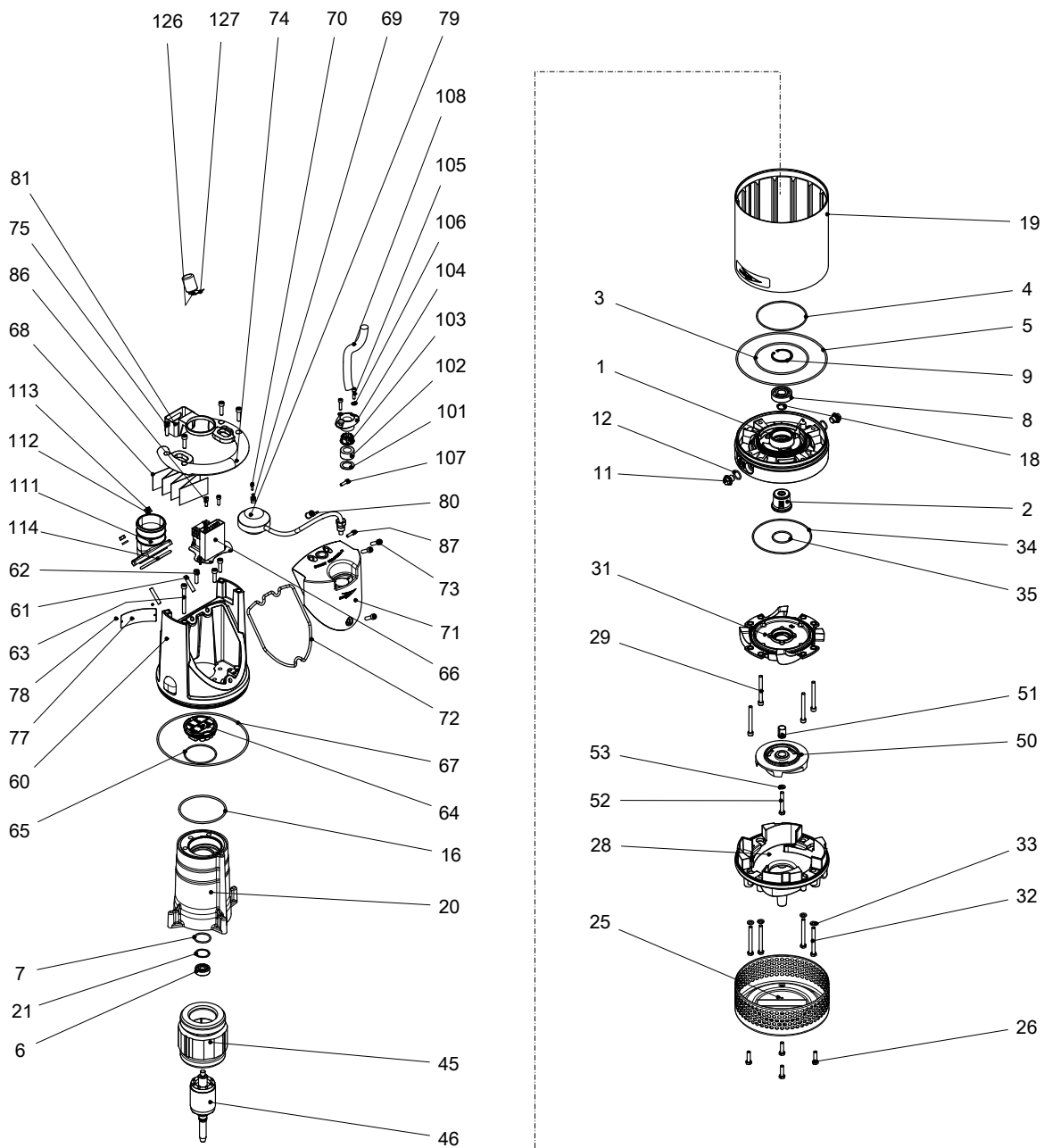


WS006265B

Type of Callout	Number	Indication
Type of code	a	Sales denomination
	b	Product code
	c	Serial number
Parameter	1	Hydraulic end
	2	Type of installation
	3	Sales code
	4	Version
	5	Production year
	6	Production cycle
	7	Running number

3 Spare Parts

3.1 Exploded view



90



800



900

20120B_expl_view_2620_172

3.2 List of parts

Pos. No	Part. No	Denomination	Qty/Version
			172
1	770 58 00	Intermediate piece	1
2	769 52 00	Mechanical seal	1
3	82 78 23	O-ring 127.0X4.0 NBR	1
4	82 74 77	O-ring 119.5X3 NBR	1
5	82 75 11	O-ring 215.0X4.0 NBR	1
6	83 33 11	Ball bearing 12X37X12 MM	1
7	82 81 00	O-ring 36.2X3.0 FPM	1
8	83 33 13	Ball bearing 20X52X15 MM	1
9	83 07 69	Retaining ring	1
11	428 22 17	Inspection screw	2
12	82 73 90	O-ring 19.2X3 NBR	2
14	90 17 52	Oil ISO VG 32	*
16	80 00 25	O-ring 114X4.0 NBR	1
17	718 05 00	Sticker CUT HAZARD	1
18	82 58 92	Retaining ring SGA 20	1
19	770 61 00	Outer casing	1
20	770 55 00	Stator housing	1
21	82 56 29	Spring washer	1
25	767 35 00	Strainer	1
26	81 48 57	Hexagon head screw M8X30-A4-70	4
28	779 99 00	Diffuser unit	MT Diffusor material: NBR
	28,1 767 34 50	Diffuser	1
	28,2 771 67 00	Suction cover	1
28	779 99 01	Diffuser unit	MT Diffusor material: NBR Prepared for zinc anodes
	28,1 767 34 51	Diffuser	1
	28,2 771 67 00	Suction cover	1
28	767 34 00	Diffuser	MT Diffusor material: NBR
28	767 34 01	Diffuser	MT Diffusor material: NBR Prepared for zinc anodes
29	83 85 19	Hex.socket hd screw M8X80-A2-70	4
31	767 39 00	Seal housing cover	1
32	81 41 17	Hexagon head screw M8X80-A2-70	4
33	82 35 74	Plain washer 8-A4-170HV	4
34	82 74 81	O-ring 139.5X3 NBR	1
35	82 74 00	O-ring 44.2X3 NBR	1
44	94 05 87	Insulating hose D=14 MM	*
44	94 05 89	Insulating hose D=18 MM	*
45	638 95 11	Stator 13-10-2b	6-leads 3-phase 60 Hz 2-poles 200V-208V Y

Pos. No	Part. No	Denomination	Qty/Version
			172
45	638 95 01	Stator 13-10-2b	1
		6-leads 3-phase 50 Hz 2-poles 220V-230V D 380V-400V Y	
		6-leads 3-phase 50 Hz 2-poles 220V-240V D	
		6-leads 3-phase 50 Hz 2-poles 380V-400V Y	
		6-leads 3-phase 60 Hz 2-poles 440V-480V Y	
45	638 95 08	Stator 13-10-2b	1
		6-leads 3-phase 60 Hz 2-poles 380V-400V Y	
		6-leads 3-phase 60 Hz 2-poles 220V D	
45	638 95 06	Stator 13-10-2b	1
		9-leads 3-phase 60 Hz 2-poles 220V-240V Y//	
		9-leads 3-phase 60 Hz 2-poles 440V-480V YSER	
45	638 95 16	Stator 13-10-2b	1
		12-leads 3-phase 60 Hz 2-poles 220V-230V D//	
		12-leads 3-phase 60 Hz 2-poles 380V-400V Y//	
		12-leads 3-phase 60 Hz 2-poles 440V-460V DSER	
45	638 95 18	Stator 13-10-2b	1
		3-leads 3-phase 50 Hz 2-poles 380V-400V Y	
		3-leads 3-phase 60 Hz 2-poles 440V-480V Y	
45	638 95 03	Stator 13-10-2b	1
		6-leads 3-phase 50 Hz 2-poles 415V-440V Y	
45	638 95 17	Stator 13-10-2b	1
		3-leads 3-phase 50 Hz 2-poles 500V-525V Y	
		3-leads 3-phase 60 Hz 2-poles 575V-600V Y	
		3-leads 3-phase 50 Hz 2-poles 525V-550V Y	
45	638 96 01	Stator 13-10-2b	1
		4-leads 1-phase 50 Hz 2-poles 220V-240V	
45	638 96 03	Stator 13-10-2b	1
		4-leads 1-phase 60 Hz 2-poles 220V-240V	
46	770 70 00	Shaft unit	1
50	771 66 00	Impeller	1
		226 B-impeller MT 50Hz 3-phase Maximum temperature 40 DC Material Hard-Iron TM	
50	771 66 02	Impeller	1
		228 B-impeller MT 60Hz 3-phase Maximum temperature 40 DC Material Hard-Iron TM	
50	771 66 01	Impeller	1
		230 B-impeller MT 50Hz 3-phase Maximum temperature 70 DC Material Hard-Iron TM	
50	771 66 03	Impeller	1
		232 B-impeller MT 60Hz 3-phase Maximum temperature 70 DC Material Hard-Iron TM	

Pos. No	Part. No	Denomination	Qty/Version
			172
50	771 65 03	Impeller 233 K-impeller MT 50Hz 1-phase Maximum temperature 40 DC Material Hard-Iron TM	1
50	771 64 00	Impeller 237 K-impeller MT 50Hz 3-phase Maximum temperature 70 DC Material Hard-Iron TM	1
50	771 65 02	Impeller 234 K-impeller MT 50Hz 3-phase Maximum temperature 40 DC Material Hard-Iron TM	1
50	771 65 00	Impeller 235 K-impeller MT 60Hz 1-phase Maximum temperature 40 DC Material Hard-Iron TM	1
50	771 64 01	Impeller 239 K-impeller MT 60Hz 3-phase Maximum temperature 70 DC Material Hard-Iron TM	1
50	771 65 01	Impeller 233 K-impeller MT 60Hz 3-phase Maximum temperature 40 DC Material Hard-Iron TM	1
51	771 70 00	Sleeve unit	1
52	81 56 58	Hexagon head screw M8X60-A4-80	1
53	82 35 74	Plain washer 8-A4-170HV	1
60	777 60 00	Cover unit	1
	60,1 706 11 00	Air release valve	1
	60,2 770 51 00	Main cover	1
61	84 46 13	Stud M8X45-A2-70	2
62	82 00 35	Hex.socket hd screw M8X30-A2-70	3
63	83 85 19	Hex.socket hd screw M8X80-A2-70	1
64	773 44 01	Terminal plate unit	1-phase
	64,1 761 43 01	Terminal plate unit	1
	64,2 773 42 05	Cable set	1
64	773 44 00	Terminal plate unit	3-phase
	64,1 761 43 01	Terminal plate unit	1
	64,2 773 42 05	Cable set	1
65	82 74 68	O-ring 74.5X3.0 NBR	1

Pos. No	Part. No	Denomination	Qty/Version
			172
66	770 71 18	Starter unit	1
		Contactor unit 50Hz 3-phase 220V - 240V Not CSA approved	
		Contactor unit 60Hz 1-phase 220V - 240V 1-phase CSA approved	
		Contactor unit 60Hz 3-phase 220V - 240V CSA approved	
		Contactor unit 60Hz 3-phase 220V - 240V Float switch CSA approved	
		Contactor unit 50Hz 1-phase 220V - 240V 1-phase Not CSA approved	
		Contactor unit 50Hz 3-phase 220V - 240V Float switch Not CSA approved	
	66,1 770 46 00	Holder	1
	66,5 83 99 96	Contactor	1
	66,8 81 99 86	Hex.socket hd screw M4X16-A2-70	2
	66,9 82 26 69	Lock nut	2
	66,13 773 42 03	Cable set	1
	66,14 773 42 04	Cable set	1
	66,15 573 58 03	Electric cable AWG 16;L=70MM CSA	1
	66,16 773 42 06	Cable set	1
66	770 71 19	Starter unit	1
		Contactor unit 50Hz 3-phase 200V - 208V Not CSA approved	
	66,1 770 46 00	Holder	1
	66,5 83 00 61	Contactor	1
	66,8 81 99 86	Hex.socket hd screw M4X16-A2-70	2
	66,9 82 26 69	Lock nut	2
	66,13 773 42 03	Cable set	1
	66,14 773 42 04	Cable set	1
	66,15 573 58 03	Electric cable AWG 16;L=70MM CSA	1
	66,16 773 42 06	Cable set	1
66	770 71 20	Starter unit	1
		Contactor unit 60Hz 3-phase 380V - 400V CSA approved	
		Contactor unit 50Hz 3-phase 380V - 400V Float switch Not CSA approved	
		Contactor unit 50Hz 3-phase 380V - 400V Not CSA approved	
	66,1 770 46 00	Holder	1
	66,5 83 99 72	Contactor	1
	66,8 81 99 86	Hex.socket hd screw M4X16-A2-70	2
	66,9 82 26 69	Lock nut	2
	66,13 773 42 03	Cable set	1
	66,14 773 42 04	Cable set	1
	66,15 573 58 03	Electric cable AWG 16;L=70MM CSA	1
	66,16 773 42 06	Cable set	1
66	770 71 21	Starter unit	1
		Contactor unit 60Hz 3-phase 440V - 480V CSA approved	
		Contactor unit 50Hz 3-phase 415V - 440V Not CSA approved	

Pos. No	Part. No	Denomination	Qty/Version
			172
	66,1 770 46 00	Holder	1
	66,4 762 56 00	Motor protector	1
	66,5 83 99 73	Contactactor	1
	66,6 81 99 86	Hex.socket hd screw M4X16-A2-70	2
	66,7 82 26 69	Lock nut	2
	66,8 81 99 86	Hex.socket hd screw M4X16-A2-70	2
	66,9 82 26 69	Lock nut	2
	66,12 773 42 02	Cable set	1
	66,14 773 42 04	Cable set	1
	66,16 773 42 06	Cable set	1
	66,17 573 58 62	Single-core cable	1
66	770 71 22	Starter unit	1
		Contactactor unit 50Hz 3-phase 500V - 500V Not CSA approved	
	66,1 770 46 00	Holder	1
	66,5 83 99 74	Contactactor	1
	66,8 81 99 86	Hex.socket hd screw M4X16-A2-70	2
	66,9 82 26 69	Lock nut	2
	66,13 773 42 03	Cable set	1
	66,14 773 42 04	Cable set	1
	66,15 573 58 03	Electric cable AWG 16;L=70MM CSA	1
	66,16 773 42 06	Cable set	1
66	770 71 23	Starter unit	1
		Contactactor unit 50Hz 3-phase 525V - 550V Not CSA approved	
	66,1 770 46 00	Holder	1
	66,4 762 56 00	Motor protector	1
	66,5 83 99 74	Contactactor	1
	66,6 81 99 86	Hex.socket hd screw M4X16-A2-70	2
	66,7 82 26 69	Lock nut	2
	66,8 81 99 86	Hex.socket hd screw M4X16-A2-70	2
	66,9 82 26 69	Lock nut	2
	66,12 773 42 02	Cable set	1
	66,14 773 42 04	Cable set	1
	66,16 773 42 06	Cable set	1
	66,17 573 58 62	Single-core cable	1
66	770 71 24	Starter unit	1
		Contactactor unit 60Hz 3-phase 575V - 600V CSA approved	
	66,1 770 46 00	Holder	1
	66,4 762 56 00	Motor protector	1
	66,5 83 00 68	Contactactor	1
	66,6 81 99 86	Hex.socket hd screw M4X16-A2-70	2
	66,7 82 26 69	Lock nut	2
	66,8 81 99 86	Hex.socket hd screw M4X16-A2-70	2
	66,9 82 26 69	Lock nut	2
	66,12 773 42 02	Cable set	1
	66,14 773 42 04	Cable set	1

Pos. No	Part. No	Denomination	Qty/Version
			172
66,16	773 42 06	Cable set	1
66,17	573 58 62	Single-core cable	1
66	770 71 15	Starter unit	1
		Capacitor unit 50Hz 1-phase 220V - 240V 1-phase Float switch Not CSA approved	
		Capacitor unit 60Hz 1-phase 220V - 240V 1-phase CSA approved	
		Capacitor unit 50Hz 1-phase 220V - 240V 1-phase Not CSA approved	
		Capacitor unit 60Hz 1-phase 220V - 240V 1-phase Float switch CSA approved	
66,1	770 46 00	Holder	1
66,2	781 83 01	Capacitor	1
66,3	83 88 57	Capacitor 20MF 400V	1
66,4	727 43 00	Start relay	1
66,6	81 99 86	Hex.socket hd screw M4X16-A2-70	2
66,7	82 26 69	Lock nut	2
66,10	717 51 00	Cable set	1
66,11	773 42 01	Cable set	1
66,12	773 42 02	Cable set	1
66,19	82 27 27	Lock nut M8-A4-70	2
67	82 75 11	O-ring 215.0X4.0 NBR	1
68	773 45 02	Connection plate	1
69	773 46 00	Thermal detector unit	1
70	81 99 86	Hex.socket hd screw M4X16-A2-70	1
71	770 52 00	Cover	1
71	770 52 01	Cover	1
		Float switch	
72	770 75 00	Gasket	1
73	82 00 35	Hex.socket hd screw M8X30-A2-70	3
74	770 53 00	Handle	1
75	82 00 35	Hex.socket hd screw M8X30-A2-70	4
77	630 68 00	Data plate USE 6306801 AS SPARE PART	1
78	82 20 88	Drive screw 4X5-A2/A4	2
79	761 04 05	Level regulator unit EU	1
		Capacitor unit 50Hz 1-phase 220V - 240V 1-phase Float switch Not CSA approved	
		Contacteur unit 50Hz 3-phase 220V - 240V Float switch Not CSA approved	
79	761 04 06	Level regulator unit EU	1
		Contacteur unit 50Hz 3-phase 380V - 400V Float switch Not CSA approved	
79	761 04 07	Level regulator unit US/CDN	1
		Capacitor unit 60Hz 1-phase 220V - 240V 1-phase Float switch CSA approved	
		Contacteur unit 60Hz 3-phase 220V - 240V Float switch CSA approved	
80	84 66 53	Cable clamp STAINLESS STEEL, CR	1
81	626 56 00	Holder FOR LEVEL REGULATOR	1

Pos. No	Part. No	Denomination	Qty/Version
			172
86	82 00 15	Hex.socket hd screw M6X20-A2-70	2
87	82 00 15	Hex.socket hd screw M6X20-A2-70	1
90	83 49 43	Plug contact	1
		3-phase 50 Hz 380V - 415V Current range: 0 - 16A Plug combined with short cable: No cable Supply connection: CEE 5-PLUG 16A	
90	83 49 44	Plug contact	1
		3-phase 50 Hz 380V - 415V Current range: 0 - 32A Plug combined with short cable: No cable Supply connection: CEE 5-PLUG 32A	
90	83 49 45	Plug contact	1
		3-phase 50 Hz 380V - 415V Current range: 0 - 16A Plug combined with short cable: No cable Supply connection: CEE 4-PLUG 16A	
90	84 06 60	Plug contact	1
		3-phase 50 Hz 380V - 415V Current range: 0 - 32A Plug combined with short cable: No cable Supply connection: CEE 4-PLUG 32A	
90	83 49 91	Plug contact	1
		1-phase 60 Hz 0V - 250V Current range: 0 - 15A Plug combined with short cable: SUBCAB 14AWG/3 Supply connection: Plug NEMA 6-15 15A 250V	
		1-phase 60 Hz 0V - 250V Current range: 0 - 15A Plug combined with short cable: No cable Supply connection: Plug NEMA 6-15 15A 250V	
90	83 74 43	Cable with plug	1
		1-phase 50 Hz 0V - 250V Current range: 0 - 16A Plug combined with short cable: SUBCAB 3G1,5 Supply connection: Plug 532.1U	
90	84 06 65	Plug contact	1
		1-phase 50 Hz 220V - 240V Current range: 0 - 16A Plug combined with short cable: SUBCAB 3G1,5 Supply connection: CEE 3-PLUG 16A	
		1-phase 50 Hz 220V - 240V Current range: 0 - 16A Plug combined with short cable: No cable Supply connection: CEE 3-PLUG 16A	
90	83 49 59	Plug contact	1
		1-phase 50 Hz 0V - 250V Current range: 0 - 10A Plug combined with short cable: No cable Supply connection: Plug T12 SEV1011 L+N+PE, 250 V 10 A	
91	94 21 00	Motor cable subcab	*
		Plug contact 1-phase 60 Hz 0V - 250V Current range: 0 - 15A Plug combined with short cable: SUBCAB 14AWG/3 Supply connection: Plug NEMA 6-15 15A 250V	
91	94 20 40	Motor cable subcab	*
		Plug contact 1-phase 50 Hz 220V - 240V Current range: 0 - 16A Plug combined with short cable: SUBCAB 3G1,5 Supply connection: CEE 3-PLUG 16A	
101	82 40 61	Plain washer (10)-22 MM	1

Pos. No	Part. No	Denomination	Qty/Version
			172
102	84 37 95	Seal sleeve (10)-12 MM	1
		SUBCAB 3G2,5 11 - 12mm Max 750V SUBCAB 3G1,5 10 - 11mm Supply connection: Plug 532.1U Max 250V SUBCAB 3G1,5 10 - 11mm Max 750V SUBCAB 4G1,5 10,50 - 11,50mm Max 750V	
102	84 37 97	Seal sleeve (14)-16 MM	1
		SUBCAB 14AWG/4 14,20 - 15,20mm Max 600V Screened 3x1,5 13,50 - 14,90mm Max 1000V SUBCAB 4G1,5+2x1,5 16 - 17mm Max 750V	
102	84 37 96	Seal sleeve (12)-14 MM	1
		SUBCAB 4G2,5 12,50 - 13,50mm Max 750V Screened 3x1,5 13,50 - 14,90mm Max 1000V SUBCAB 14AWG/3 13,20 - 14,20mm Max 600V	
102	84 37 99	Seal sleeve (18)-20 MM	1
		SUBCAB S3x2,5+3x2,5/3+S(4x0,5) 18 - 20mm Max 1000V SUBCAB 14AWG/7 18 - 20mm Max 600V	
102	84 37 98	Seal sleeve (16)-18 MM	1
		SUBCAB 12AWG/4 17 - 18mm Max 600V	
103	678 58 12	Cable clip (10)-12 MM	1
		SUBCAB 3G2,5 11 - 12mm Max 750V SUBCAB 3G1,5 10 - 11mm Supply connection: Plug 532.1U Max 250V SUBCAB 3G1,5 10 - 11mm Max 750V SUBCAB 4G1,5 10,50 - 11,50mm Max 750V	
103	678 58 16	Cable clip (14)-16 MM	1
		SUBCAB 14AWG/4 14,20 - 15,20mm Max 600V Screened 3x1,5 13,50 - 14,90mm Max 1000V SUBCAB 4G1,5+2x1,5 16 - 17mm Max 750V	
103	678 58 14	Cable clip (12)-14 MM	1
		SUBCAB 4G2,5 12,50 - 13,50mm Max 750V Screened 3x1,5 13,50 - 14,90mm Max 1000V SUBCAB 14AWG/3 13,20 - 14,20mm Max 600V	
103	678 58 20	Cable clip (18)-20 MM	1
		SUBCAB S3x2,5+3x2,5/3+S(4x0,5) 18 - 20mm Max 1000V SUBCAB 14AWG/7 18 - 20mm Max 600V	
103	678 58 18	Cable clip (16)-18 MM	1
		SUBCAB 12AWG/4 17 - 18mm Max 600V	
104	686 87 00	Entrance flange	1
105	83 02 79	Hex.socket hd screw M6X25-A4-70	2
106	82 35 73	Plain washer 6-A4-170	2

Pos. No	Part. No	Denomination	Qty/Version
			172
107	82 00 15	Hex.socket hd screw M6X20-A2-70	1
107	82 00 15	Hex.socket hd screw M6X20-A2-70	2
108	773 47 01	Motor cable unit	SUBCAB 3G1,5 10 - 11mm L= 20m Supply connection: Plug 532.1U Max 250V 1
108	773 47 02	Motor cable unit	SUBCAB 3G1,5 10 - 11mm L= 20m Max 750V 1
108	773 47 05	Motor cable unit	SUBCAB 4G1,5 10,50 - 11,50mm L= 20m Max 750V 1
108	773 47 10	Motor cable unit	SUBCAB 4G1,5+2x1,5 16 - 17mm L= 20m Max 750V 1
108	773 47 06	Motor cable unit	SUBCAB 4G2,5 12,50 - 13,50mm L= 20m Max 750V 1
108	773 47 03	Motor cable unit	SUBCAB 3G2,5 11 - 12mm L= 20m Max 750V 1
108	773 47 04	Motor cable unit	SUBCAB 14AWG/3 13,20 - 14,20mm L= 16m Max 600V 1
108	773 47 07	Motor cable unit	SUBCAB 14AWG/4 14,20 - 15,20mm L= 16m Max 600V 1
108	773 47 15	Motor cable unit	SUBCAB 14AWG/7 18 - 20mm L= 16m Max 600V 1
108	773 47 08	Motor cable unit	SUBCAB 12AWG/4 17 - 18mm L= 16m Max 600V 1
108	773 47 09	Motor cable unit	Screened 3x1,5 13,50 - 14,90mm L= 20m Max 1000V 1
108	773 47 19	Motor cable unit	SUBCAB S3x2,5+3x2,5/3+S(4x0,5) 18 - 20mm L= 20m Max 1000V 1
110	83 18 46	Coupling part	1
111	724 44 00	Discharge connection	DN 75 Hose 3" aluminium DN 75 Hose Thread: ISO G3A Outer Second outlet included aluminium 1
111	724 44 01	Discharge connection	DN 75 Thread: ISO G3A Outer Quick coupling: Storz aluminium DN 75 Thread: ISO G3A Outer aluminium DN 75 Hose Thread: ISO G3A Outer Second outlet included aluminium 1
111	724 44 03	Discharge connection	DN 75 Thread: NPT 3-8 Outer aluminium 1
112	82 37 03	Plain washer A2-170HV M8	2
113	82 23 32	Hexagon nut M8-A4-70	2
114	82 74 08	O-ring 79.2X5.7-NBR	1
120	82 20 88	Drive screw 4X5-A2/A4	2
121	630 76 00	Plate HOT WATER PRODUCT	1
126	82 23 30	Hexagon nut M5-A4-70	2
127	429 92 02	Plate	1
130	554 23 52	Starter	Start 156-B Single phase 50 Hz 220V - 240 V - 10 A Overload supervision Supply connection on terminal Cable gland diameter: 13 - 20 mm CSA approved 1

Pos. No	Part. No	Denomination	Qty/Version
			172
130	554 23 53	Starter	1
		Start 156-B Single phase 60 Hz 220V - 240 V - 10 A Overload supervision Supply connection on terminal Cable gland diameter: 13 - 20 mm CSA approved	
130	593 04 29	Starter	1
		151 Single phase 50 Hz 220V - 240 V - 10 A Overload supervision Supply connection on terminal Cable gland diameter: 13 - 18 mm CSA approved	
130	593 04 30	Starter	1
		161 Single phase 60 Hz 220V - 240 V - 10 A Overload supervision Supply connection on terminal Cable gland diameter: 13 - 18 mm CSA approved	
130	648 36 03	Starter	1
		350 3-phase 50 Hz 380V - 415 V Current range: 4 - 6,30 A Overload supervision Phase sequence indicator Supply connection CEE 5-PLUG 16A Cable gland diameter: 10 - 20 mm Not CSA approved	
130	648 36 13	Starter	1
		350 3-phase 50 Hz 380V - 415 V Current range: 4 - 6,30 A Overload supervision Phase sequence indicator Supply connection CEE 5-PLUG 32A Cable gland diameter: 10 - 20 mm Not CSA approved	
130	648 36 44	Starter	1
		350 3-phase 50 Hz 220V - 240 V Current range: 6,30 - 9 A Overload supervision Phase sequence indicator Supply connection on terminal Cable gland diameter: 10 - 20 mm Not CSA approved	
130	648 36 43	Starter	1
		350 3-phase 50 Hz 415V - 440 V Current range: 4 - 6,30 A Overload supervision Phase sequence indicator Supply connection on terminal Cable gland diameter: 10 - 20 mm Not CSA approved	
		350 3-phase 50 Hz 380V - 400 V Current range: 4 - 6,30 A Overload supervision Phase sequence indicator Supply connection on terminal Cable gland diameter: 10 - 20 mm Not CSA approved	
130	648 36 42	Starter	1
		350 3-phase 50 Hz 500V - 500 V Current range: 2,50 - 4 A Overload supervision Phase sequence indicator Supply connection on terminal Cable gland diameter: 10 - 20 mm Not CSA approved	
130	554 30 03	Starter	1
		351 3-phase 50 Hz 380V - 415 V Current range: 4 - 6,30 A Overload supervision Phase sequence indicator Supply connection CEE 5-PLUG 16A Cable gland diameter: 10 - 20 mm Not CSA approved	
130	554 30 13	Starter	1
		351 3-phase 50 Hz 380V - 415 V Current range: 4 - 6,30 A Overload supervision Phase sequence indicator Supply connection CEE 5-PLUG 32A Cable gland diameter: 11 - 21 mm Not CSA approved	

Pos. No	Part. No	Denomination	Qty/Version
			172
130	554 30 43	Starter 351 3-phase 50 Hz 380V - 415 V Current range: 4 - 6,30 A Overload supervision Phase sequence indicator Supply connection on terminal Cable gland diameter: 11 - 21 mm Not CSA approved	1
130	554 30 72	Starter 351 3-phase 50 Hz 500V - 500 V Current range: 2,50 - 4 A Overload supervision Phase sequence indicator Supply connection CEE 4-PLUG 32A Cable gland diameter: 11 - 21 mm Not CSA approved	1
130	554 30 52	Starter 351 3-phase 50 Hz 440V - 500 V Current range: 2,50 - 4 A Overload supervision Phase sequence indicator Supply connection on terminal Cable gland diameter: 11 - 21 mm Not CSA approved	1
130	554 30 64	Starter 351 3-phase 50 Hz 220V - 240 V Current range: 6 - 10 A Overload supervision Phase sequence indicator Supply connection on terminal Cable gland diameter: 11 - 21 mm Not CSA approved	1
130	554 20 05	Starter 356 3-phase 60 Hz 200V - 208 V Current range: 9 - 14 A Overload supervision Supply connection on terminal Cable gland diameter: 13 - 25 mm CSA approved	1
130	554 20 04	Starter 356 3-phase 60 Hz 220V - 240 V Current range: 6 - 10 A Overload supervision Supply connection on terminal Cable gland diameter: 9 - 18 mm CSA approved	1
130	554 20 03	Starter 356 3-phase 50/60 Hz 380V - 415 V Current range: 4 - 6 A Overload supervision Supply connection on terminal Cable gland diameter: 9 - 18 mm CSA approved 356 3-phase 60 Hz 440V - 480 V Current range: 4 - 6 A Overload supervision Supply connection on terminal Cable gland diameter: 9 - 18 mm CSA approved	1
130	554 20 02	Starter 356 3-phase 60 Hz 575V - 600 V Current range: 2,50 - 4 A Overload supervision Supply connection on terminal Cable gland diameter: 9 - 18 mm CSA approved	1
130	554 21 05	Starter 356 3-phase 60 Hz 200V - 208 V Current range: 9 - 14 A Overload supervision Supply connection on terminal Cable gland diameter: 13 - 25 mm CSA approved	1
130	554 21 04	Starter 356 3-phase 60 Hz 220V - 240 V Current range: 6 - 10 A Overload supervision Supply connection on terminal Cable gland diameter: 13 - 25 mm CSA approved	1

Pos. No	Part. No	Denomination	Qty/Version
			172
130	554 21 03	Starter	1
		356 3-phase 60 Hz 440V - 480 V Current range: 4 - 6 A Overload supervision Supply connection on terminal Cable gland diameter: 13 - 25 mm CSA approved	
		356 3-phase 50/60 Hz 380V - 415 V Current range: 4 - 6 A Overload supervision Supply connection on terminal Cable gland diameter: 13 - 25 mm CSA approved	
130	554 21 02	Starter	1
		356 3-phase 60 Hz 575V - 600 V Current range: 2,50 - 4 A Overload supervision Supply connection on terminal Cable gland diameter: 13 - 25 mm CSA approved	
130	554 25 03	Starter	1
		BCD 4 3-phase 50 Hz 380V - 415 V Current range: 3,70 - 5,50 A Overload supervision Phase sequence indicator Supply connection CEE 5-PLUG 16A Cable gland diameter: 13 - 18 mm Not CSA approved	
130	554 25 13	Starter	1
		BCD 4 3-phase 50 Hz 380V - 415 V Current range: 3,70 - 5,50 A Overload supervision Phase sequence indicator Supply connection CEE 5-PLUG 32A Cable gland diameter: 13 - 18 mm Not CSA approved	
130	554 25 43	Starter	1
		BCD 4 3-phase 50 Hz 380V - 415 V Current range: 3,70 - 5,50 A Overload supervision Phase sequence indicator Supply connection on terminal Cable gland diameter: 13 - 18 mm Not CSA approved	
800	779 79 00	O-ring kit	1
		NBR	
801	779 88 00	Anode unit	1
816	779 92 00	Wear part kit	1
		MT, 50HZ, K-IMP. CURVE CODE:234	
816	779 92 01	Wear part kit	1
		MT, 50HZ, K-IMP. CURVE CODE:238	
816	779 92 02	Wear part kit	1
		MT, K-IMP. 50HZ:233,237 60HZ:236	
816	779 92 03	Wear part kit	1
		MT, 60HZ, K-IMP. CURVE CODE:240	
816	779 92 04	Wear part kit	1
		MT, 60HZ, K-IMP. CURVE CODE:235,239	
816	779 92 05	Wear part kit	1
		MT, 50HZ, B-IMP. CURVE CODE:226	
816	779 92 06	Wear part kit	1
		MT, 50HZ, B-IMP. CURVE CODE:230	
816	779 92 07	Wear part kit	1
		MT, 60HZ, B-IMP. CURVE CODE: 228	
816	779 92 08	Wear part kit	1
		MT, 60HZ, B-IMP. CURVE CODE:232	
817	779 93 00	Hydraulic repair kit K-MT	1
		MT, K-IMP. DIFFUSER:NBR SEAL HOUSING:NBR	
817	779 93 01	Hydraulic repair kit B-MT	1
		MT, B-IMP. DIFFUSER:NBR SEAL HOUSING:NBR	
900	779 85 00	Basic repair kit	1
		NBR TYPE P SSIC/SSIC	
903	731 69 00	Low suction kit	1



ООО «Бауманс Груп» - официальный партнер фирмы Flygt в России.

Тел: +7 495 121 49 50

Эл. почта: info@baumgroup.ru

Сайт: www.baumgroup.ru